

# Child Sexual Exploitation (CSE) Flow chart for Health services.

The following flowchart illustrates the pathway which should be used in conjunction with LSCB procedures to support health staff to identify and refer Children and Young People who are at risk of or experiencing CSE.

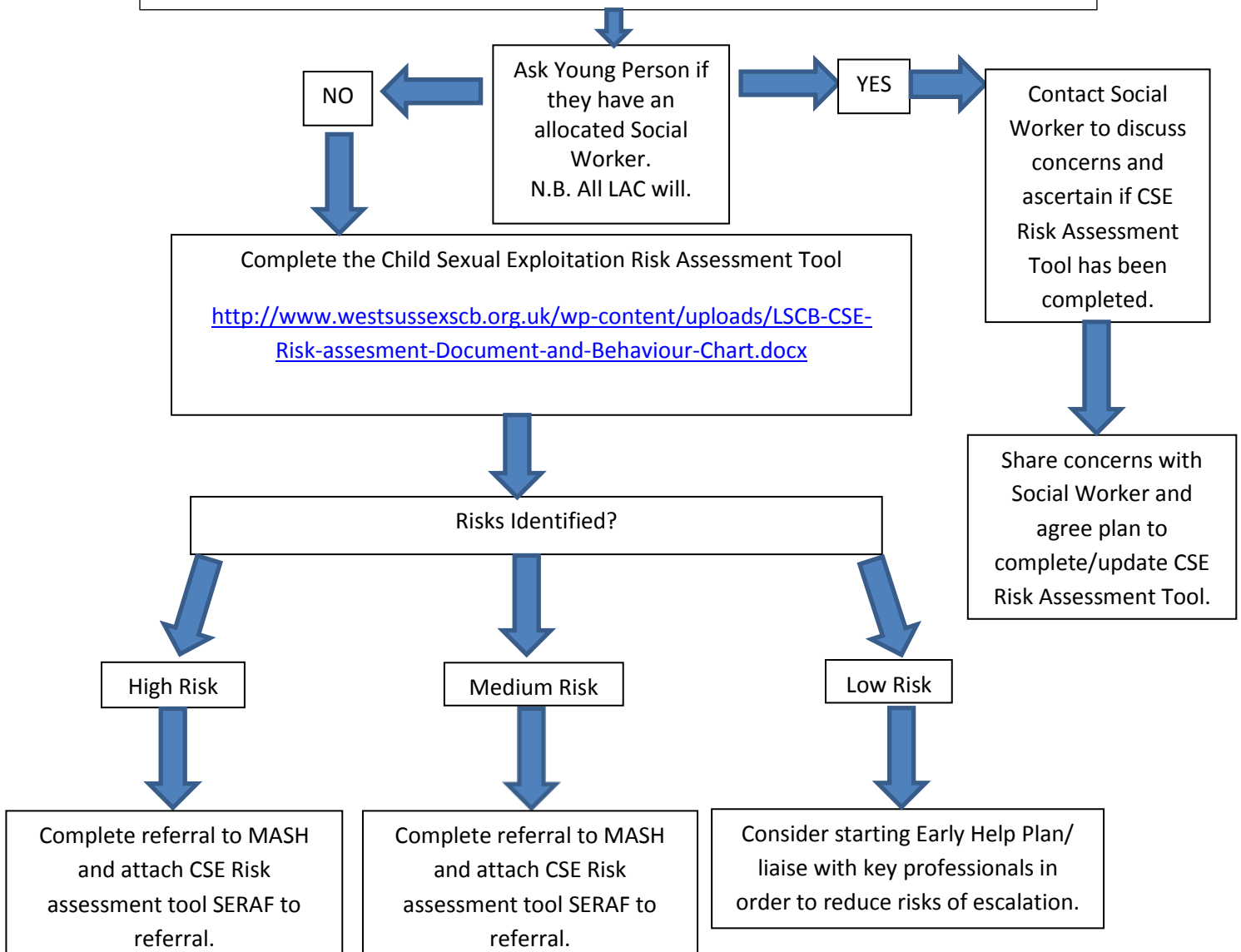
<http://www.westsussexscb.org.uk/>

Health professional becomes concerned about the behaviour of a young person's aged between 13-18 years which may indicate actual or potential CSE.

**Any concerns in regards a child under 13 years must be referred to MASH.**

MASH@westsussex.gcsx.gov.uk

Tel:- 01403 229900



For advice and to discuss any concerns around CSE please contact:

Jenny Whyte, Specialist Nurse Practitioner: CSE

Mobile:- 07703 381523 / [Jenny.whyte@nhs.net](mailto:Jenny.whyte@nhs.net)